

Natural changes of population 1961 – 2022

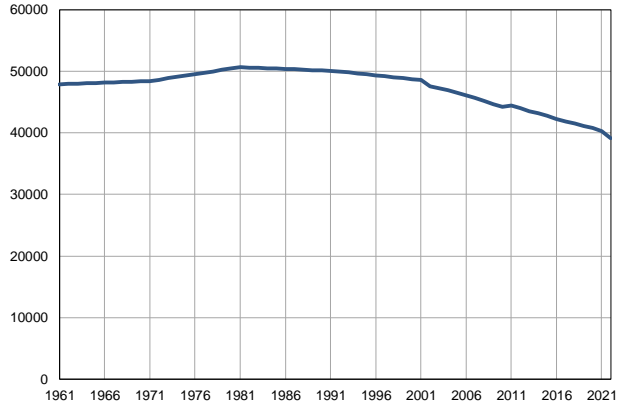
Profile
July 2023

Gornji Milanovac

	1961	2022
Population size	47894	39125
Livebirths, Number	672	332
Deaths, Number	419	710
Natural increase, Number	253	-378
Infants deaths, Number	34	3
Livebirths, per 1,000 population	14	9
Deaths, per 1,000 population	9	18
Natural increase, per 1,000 population	5	-10
Infants deaths, per 1,000 livebirths	51	9

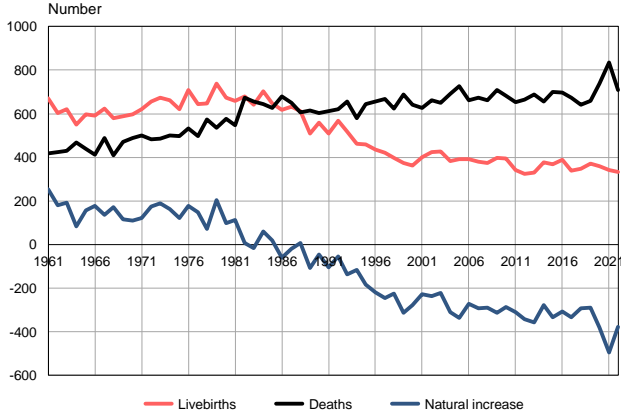
Source: Vital Statistics, SORS

Population size, 1961–2022



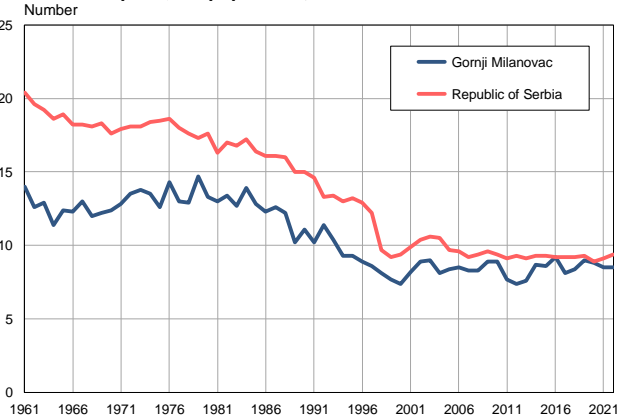
Source: Vital Statistics, SORS

Livebirths, deaths and natural increase, 1961–2022



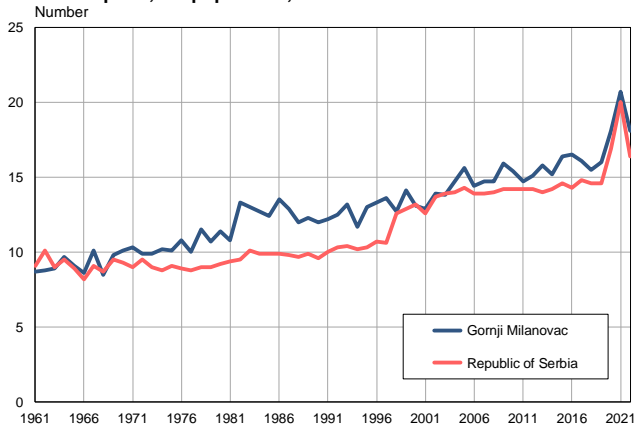
Source: Vital Statistics, SORS

Livebirths per 1,000 population, 1961–2022



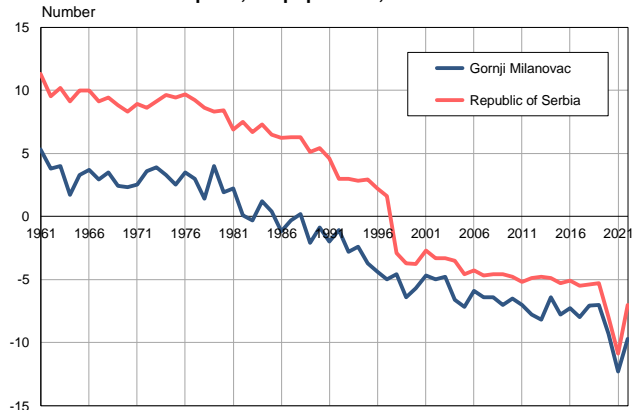
Source: Vital Statistics, SORS

Deaths per 1,000 population, 1961–2022



Source: Vital Statistics, SORS

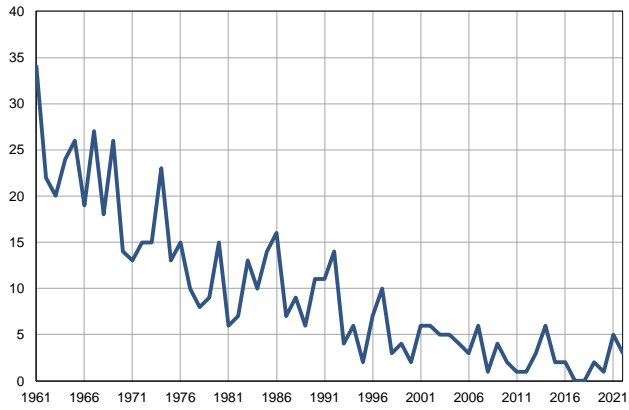
Natural increase per 1,000 population, 1961–2022



Source: Vital Statistics, SORS

Infants deaths, 1961–2022

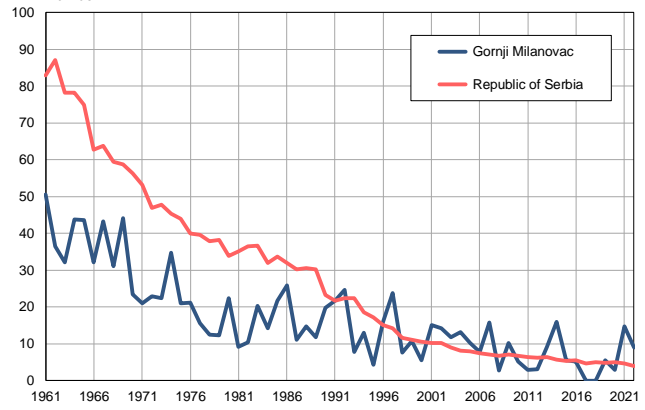
Number



Source: Vital Statistics, SORS

Infants deaths per 1,000 livebirths, 1961–2022

Number



Source: Vital Statistics, SORS

Table. Natural changes of population, Gornji Milanovac

Year	Number of population	Livebirths	Deaths	Natural increase	Infants deaths	per 1000 population			Infant deaths per 1000 livebirths
						Livebirths	Deaths	Natural increase	
1961	47894	672	419	253	34	14.0	8.7	5.3	50.6
1962	47947	604	423	181	22	12.6	8.8	3.8	36.4
1963	47999	621	429	192	20	12.9	8.9	4.0	32.2
1964	48052	549	467	82	24	11.4	9.7	1.7	43.7
1965	48104	596	439	157	26	12.4	9.1	3.3	43.6
1966	48157	590	412	178	19	12.3	8.6	3.7	32.2
1967	48210	625	489	136	27	13.0	10.1	2.9	43.2
1968	48262	580	408	172	18	12.0	8.5	3.5	31.0
1969	48315	589	472	117	26	12.2	9.8	2.4	44.1
1970	48367	598	488	110	14	12.4	10.1	2.3	23.4
1971	48420	622	500	122	13	12.8	10.3	2.5	20.9
1972	48643	656	483	173	15	13.5	9.9	3.6	22.9
1973	48866	674	486	188	15	13.8	9.9	3.9	22.3
1974	49089	663	500	163	23	13.5	10.2	3.3	34.7
1975	49312	620	497	123	13	12.6	10.1	2.5	21.0
1976	49536	709	533	176	15	14.3	10.8	3.5	21.2
1977	49759	645	496	149	10	13.0	10.0	3.0	15.5
1978	49982	647	574	73	8	12.9	11.5	1.4	12.4
1979	50205	739	535	204	9	14.7	10.7	4.0	12.2
1980	50428	673	576	97	15	13.3	11.4	1.9	22.3
1981	50651	660	546	114	6	13.0	10.8	2.2	9.1
1982	50595	680	674	6	7	13.4	13.3	0.1	10.3
1983	50538	640	656	-16	13	12.7	13.0	-0.3	20.3
1984	50482	703	643	60	10	13.9	12.7	1.2	14.2
1985	50425	646	626	20	14	12.8	12.4	0.4	21.7
1986	50369	618	678	-60	16	12.3	13.5	-1.2	25.9
1987	50313	632	651	-19	7	12.6	12.9	-0.3	11.1
1988	50256	611	605	6	9	12.2	12.0	0.2	14.7
1989	50200	510	616	-106	6	10.2	12.3	-2.1	11.8
1990	50143	558	604	-46	11	11.1	12.0	-0.9	19.7
1991	50087	510	613	-103	11	10.2	12.2	-2.0	21.6
1992	49938	567	622	-55	14	11.4	12.5	-1.1	24.7
1993	49789	518	655	-137	4	10.4	13.2	-2.8	7.7
1994	49639	463	579	-116	6	9.3	11.7	-2.4	13.0
1995	49490	460	645	-185	2	9.3	13.0	-3.7	4.3
1996	49341	437	657	-220	7	8.9	13.3	-4.4	16.0
1997	49192	421	667	-246	10	8.6	13.6	-5.0	23.8
1998	49043	399	624	-225	3	8.1	12.7	-4.6	7.5
1999	48894	375	689	-314	4	7.7	14.1	-6.4	10.7
2000	48744	362	640	-278	2	7.4	13.1	-5.7	5.5
2001	48595	400	627	-227	6	8.2	12.9	-4.7	15.0
2002	47589	424	662	-238	6	8.9	13.9	-5.0	14.2
2003	47272	427	650	-223	5	9.0	13.8	-4.8	11.7
2004	46917	382	691	-309	5	8.1	14.7	-6.6	13.1
2005	46492	391	726	-335	4	8.4	15.6	-7.2	10.2

Table. Natural changes of population, Gornji Milanovac

Year	Number of population	Livebirths	Deaths	Natural increase	Infants deaths	per 1000 population			Infant deaths per 1000 livebirths
						Livebirths	Deaths	Natural increase	
2006	46092	392	663	-271	3	8.5	14.4	-5.9	7.7
2007	45670	381	673	-292	6	8.3	14.7	-6.4	15.7
2008	45167	374	663	-289	1	8.3	14.7	-6.4	2.7
2009	44663	397	710	-313	4	8.9	15.9	-7.0	10.1
2010	44194	395	682	-287	2	8.9	15.4	-6.5	5.1
2011	44473	343	653	-310	1	7.7	14.7	-7.0	2.9
2012	43990	325	666	-341	1	7.4	15.1	-7.8	3.1
2013	43533	331	688	-357	3	7.6	15.8	-8.2	9.1
2014	43140	377	655	-278	6	8.7	15.2	-6.4	15.9
2015	42730	369	701	-332	2	8.6	16.4	-7.8	5.4
2016	42298	388	696	-308	2	9.2	16.5	-7.3	5.2
2017	41872	339	673	-334	0	8.1	16.1	-8.0	0.0
2018	41492	349	642	-293	0	8.4	15.5	-7.1	0.0
2019	41154	370	658	-288	2	9.0	16.0	-7.0	5.4
2020	40749	358	738	-380	1	8.8	18.1	-9.3	2.8
2021	40260	341	835	-494	5	8.5	20.7	-12.3	14.7
2022	39125	332	710	-378	3	8.5	18.1	-9.7	9.0

Source: Vital Statistics, SORS

Definitions

Population size

Number of population in the respective year. The data on the number of population in 1961, 1971, 1981 and 1991 are census data, while for the inter-census years the number of population was calculated as an average inter-census difference. From 2002 are given the population estimates that were calculated according to the census of population results and the annual statistics of natural mechanical population movements.

Livebirths

Absolute number of live births in the course of a year. Live born child means a child giving vital signs after birth (breathing, i.e. heartbeat), even for the shortest time, regardless the mother's pregnancy duration.

Deaths

Absolute number of deaths in the course of a year. Deceased is a person that whenever after having been born live, shows permanently stopped vital signs.

Natural increase

Natural population increase is the number of live births minus the number of deaths.

Infants deaths

Absolute number of infants deaths in the course of a year. Deceased infant is a child that after having been born live and before aged one year, shows permanently stopped vital signs.

Livebirths, per 1 000 population

Livebirths rate is the ratio of the number of live births and the population size in the respective year. The number of live births is divided by the population size and then multiplied by 1000.

Deaths, per 1 000 population

General mortality rate represents the ratio between the number of deaths and the population size in the respective year. The number of deaths is divided by population size and then multiplied by 1000.

Natural increase, per 1 000 population

Natural population increase rate is the difference between the number of live births and the number of deaths, in relation to the population size in the respective year.

Natural population increase rate = (number of live births - number of deaths) / population size * 1000

Infants deaths, per 1 000 livebirths

Infant mortality rate is the ratio of deceased children under 1 year of age and live births in the respective year. The mortality rate is expressed per 1000 live births.

Infant mortality rate = (number of deceased children under 1 year of age / number of live births) * 1000

Additional info:



Download all database data in Excel format:

[Data](#)



DevInfo profiles:

devinfo.stat.gov.rs/SerbiaProfileLauncher/?lang=en



DevInfo online database:

devinfo.stat.gov.rs/vitalna



For additional information or questions please contact:

devinfo@stat.gov.rs